

INTERIOR low-profile

Recessed Housing Design

The interior low-profile camera is specifically designed for installations that require flush mounting. Projecting only a 3/4 inch, our low-profile interior cameras have a more discreet appearance while maintain 360° Degrees of Aiming.

HD Quality Day or Night

Our low-profile interior camera have the same video and infrared (IR) functionality as our regular version, featuring full color, super image quality with 1/3" Sony HD CCD Imager.

Simple to Install

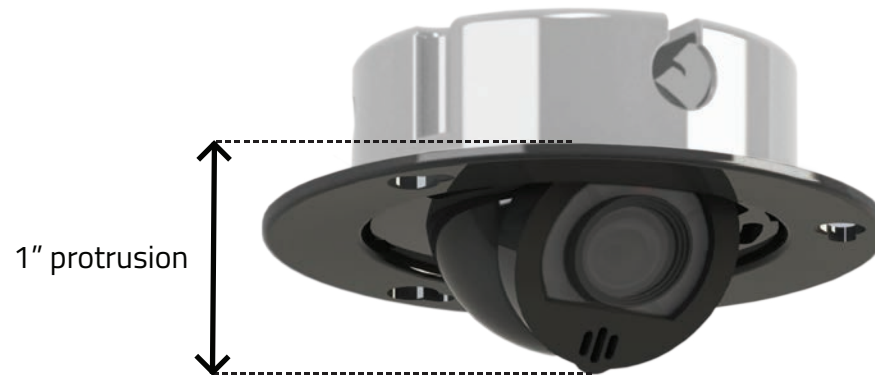
Extremely easy to install. With three simple screws and a single strand pigtail connector cable, our cameras are installed in mere minutes.

dimensions

Height/		2.13"/		5.41/
Width/	in	4.33"/	cm	11/
Depth		4.33"		11
Height (protrusion)	in	1"	cm	2.54
Weight	lb	0.49	g	221

image/audio capture

Focal Length Options	mm	2.5 / 2.9 / 3.6 / 4.3 / 6.0
Image Sensor	-	Sony EX-VIEW HAD II 1/3" CCD Sensor
Image Resolution	px	1020 (H) x 508 (V)
TV Lines of Resolution	lines	800
Light Sensitivity (Day)	lux	0.01 lux (IR-OFF)
Light Sensitivity (Night)	lux	0 lux (IR-ON)



camera specifications

Gamma Correction	-	0.45
Electronic Iris	s	1/60 ~ 1/100,000
Video Out	-	1.0 Vp-p, 75 Ohm
Signal/Noise Ratio	db	> 54

operational specifications

Operational Temperature	°F	14°F ~ 158°F
Operational Temperature	°C	-10°C ~ 70°C
Storage Temperature	°F	-4°F ~ 158°F
Storage Temperature	°C	-20°C ~ 70°C

power consumption

Infrared LEDS off	mA	95mA at 12V
Infrared LEDS on	mA	190mA at 12V
Operating Voltage	V	9.5V to 16V
TV Lines of Resolution	lines	800

- Full color, super image quality with 1/3" Sony HD CCD Imager
- Working low light — can work in less than 0.01Lux f1.0 or 0Lux with infrared
- Clear black and white image while IR is activated
- Super IR 5m (IR lens adjust), autoexpose adjust, over-exposure control
- High Definition microphone with video noise reduction circuitry and noise-gate filter
- Defog and Digital De-mist to improve image quality in foggy environments
- Smart IR for optimized clear images at night
- Double Scan Wide Dynamic Range (WDR)
- Low power consumption (190mA @ DC12V) to extend camera lifespan
- Digital slow shutter to enhance low-light images
- Full 360-degree aiming adjustment
- Vandal-proof stamped metal housing
- Waterproof (IP68 Compliant)
- Scratch-resistant, anti-glare lens
- BLC and HLC optimize light levels